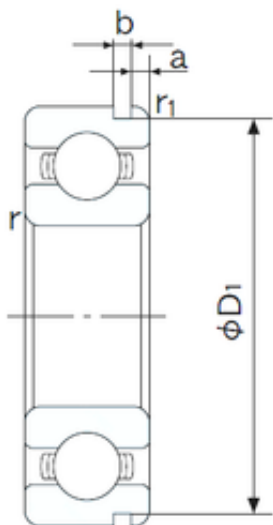




## Bearing Rolamentos do Brasil Ltda.



95 mm x 145 mm x 24 mm NACHI 6019N deep groove ball bearings

Bearing No. 6019N

|                               |                  |
|-------------------------------|------------------|
| Size                          | 95x145x24 mm     |
| Bore Diameter                 | 95 mm            |
| Outer Diameter                | 145 mm           |
| Width                         | 24 mm            |
| d                             | 95 mm            |
| D                             | 145 mm           |
| B                             | 24 mm            |
| C                             | 24 mm            |
| a                             | 3.71 mm          |
| b                             | 3.1 mm           |
| r min.                        | 1.5 mm           |
| r1 min.                       | 0.5 mm           |
| D1                            | 140.23 mm        |
| Weight                        | 1.16 Kg          |
| Basic dynamic load rating (C) | 60,5 kN          |
| Basic static load rating (C0) | 54 kN            |
| (Grease) Lubrication Speed    | 4500 r/min       |
| Bore Type                     | Cylindrical Bore |
| Enclosure                     | Open             |
| Configuration                 | Single Row       |
| Bore Size                     | 95 mm            |
| Outside Diameter              | 145 mm           |
| Width                         | 24 mm            |
| Fillet Radius/Chamfer         | 1.5 mm           |
| r1                            | 0.5 mm           |

6019N Bearing 2D drawings and 3D CAD models



## Bearing Rolamentos do Brasil Ltda.

|                         |                   |
|-------------------------|-------------------|
| Groove Width            | 3.1 mm            |
| Groove Diameter         | 140.2 mm          |
| a (max)                 | 3.7 mm            |
| Dynamic Load Rating     | 60,500 N          |
| Static Load Rating      | 54,000 N          |
| Limiting Speed - Grease | 4,500 rpm         |
| Limiting Speed - Oil    | 5,300 rpm         |
| Factor fo               | 15.8              |
| Radial Clearance        | 0.012 to 0.036 mm |
| da (min)                | 102 mm            |
| Da (max)                | 138 mm            |
| Dx (min)                | 157 mm            |
| ra (max)                | 1.5 mm            |
| Cy (max)                | 6.1 mm            |